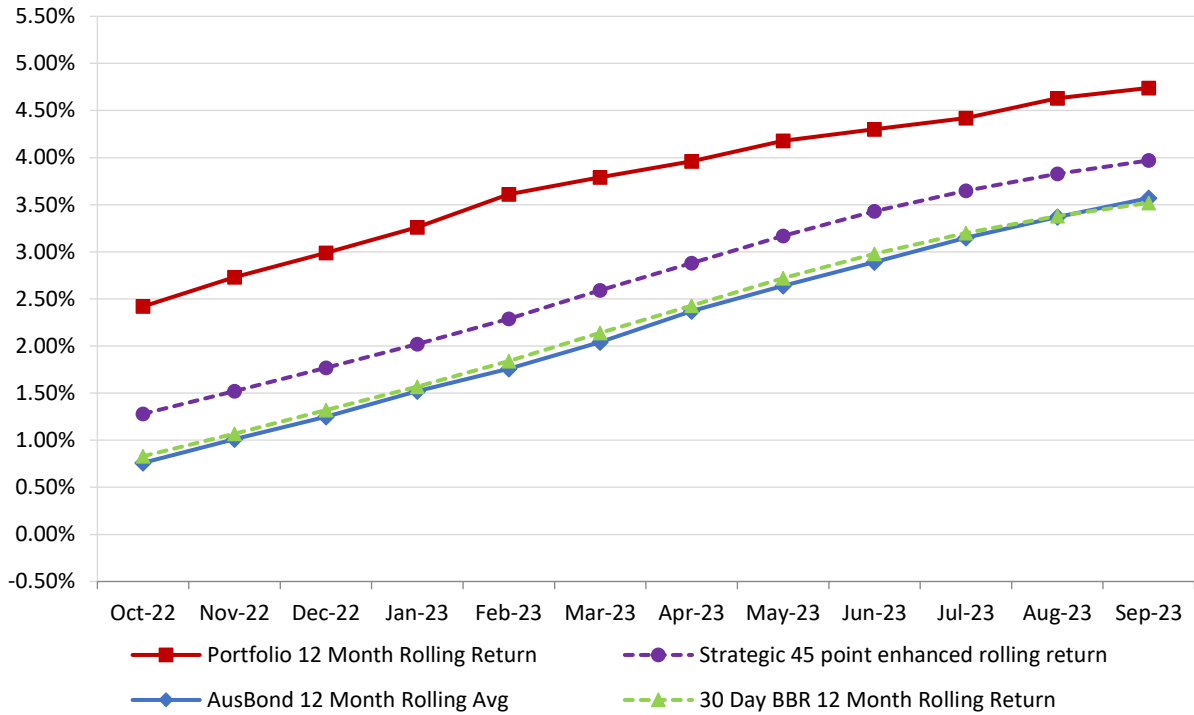


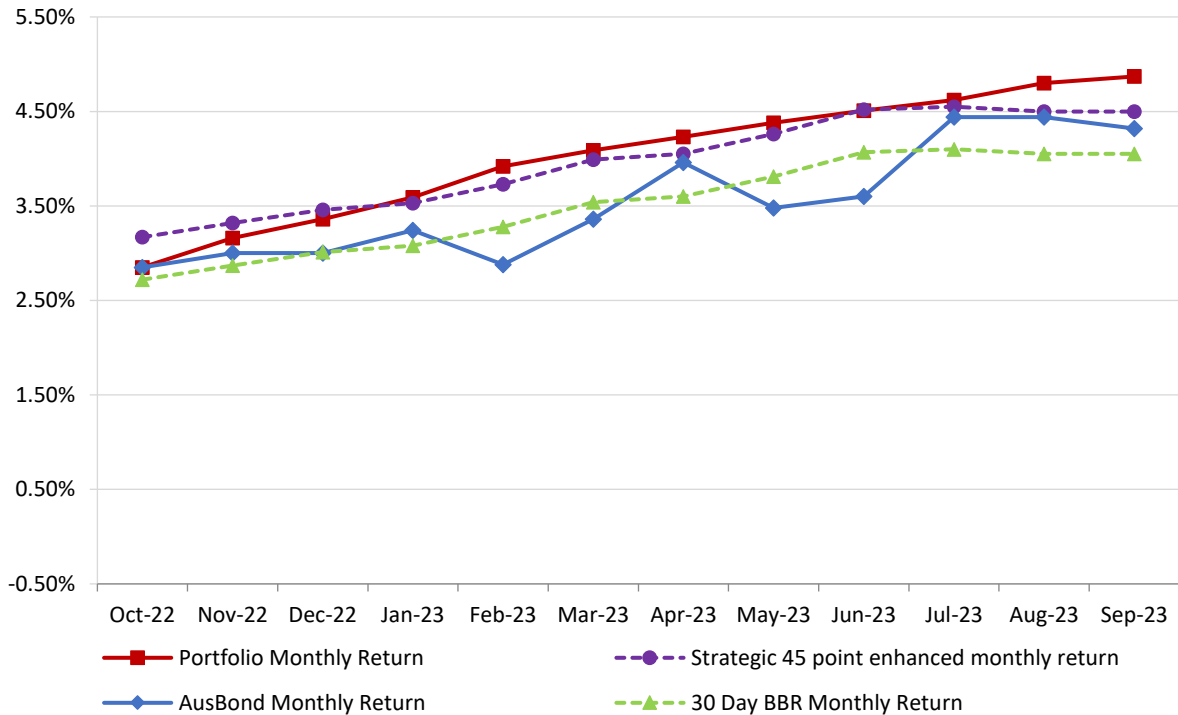
# **Attachment B**

**Investment Performance  
as at 30 September 2023**

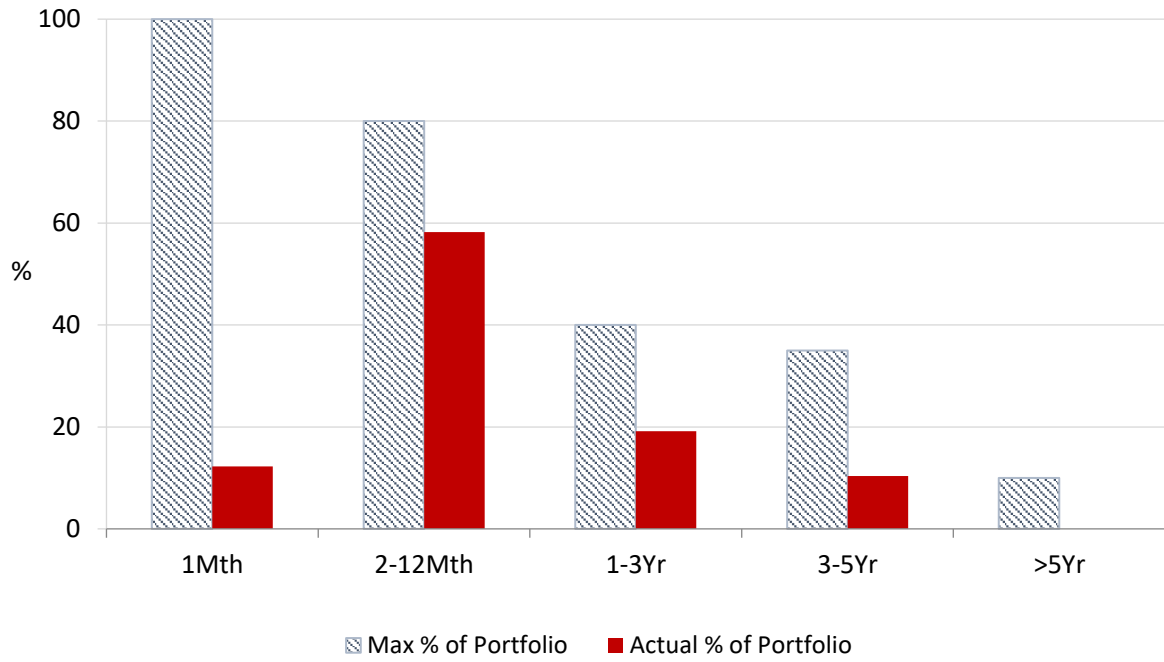
**12 Month Rolling Averages**  
**Actual Portfolio vs Strategic Enhanced Benchmark vs AusBond Benchmark vs 30 Day BBR Benchmark**  
**September 2023**



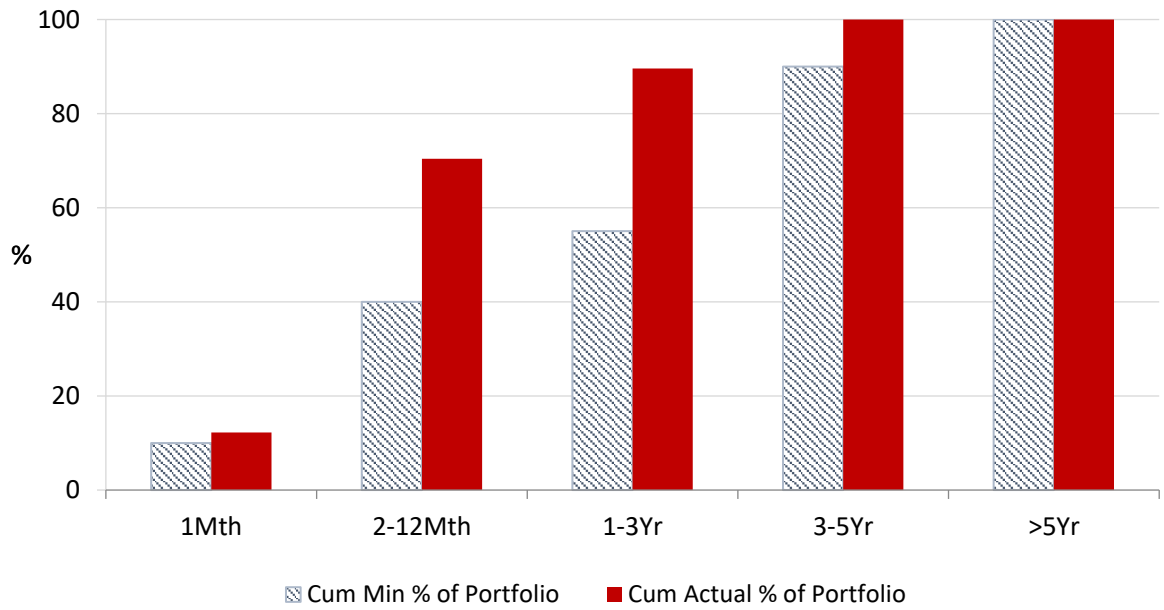
**Monthly Results**  
**Actual Portfolio vs Strategic Enhanced Benchmark vs AusBond Benchmark vs 30 Day BBR Benchmark**  
**September 2023**



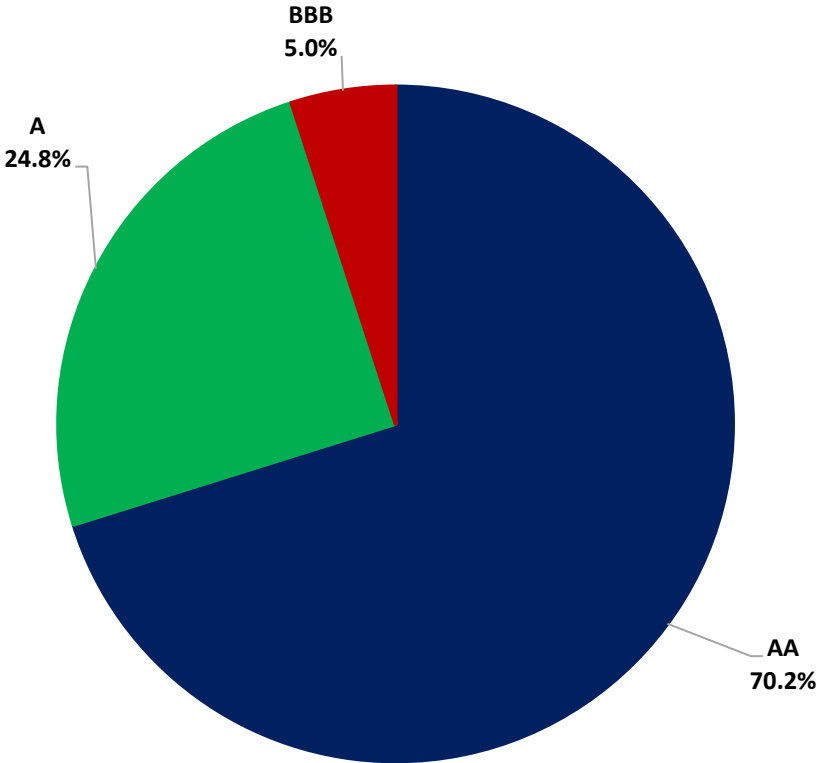
**Portfolio Liquidity - Maximum Allowances as at 30 September 2023**



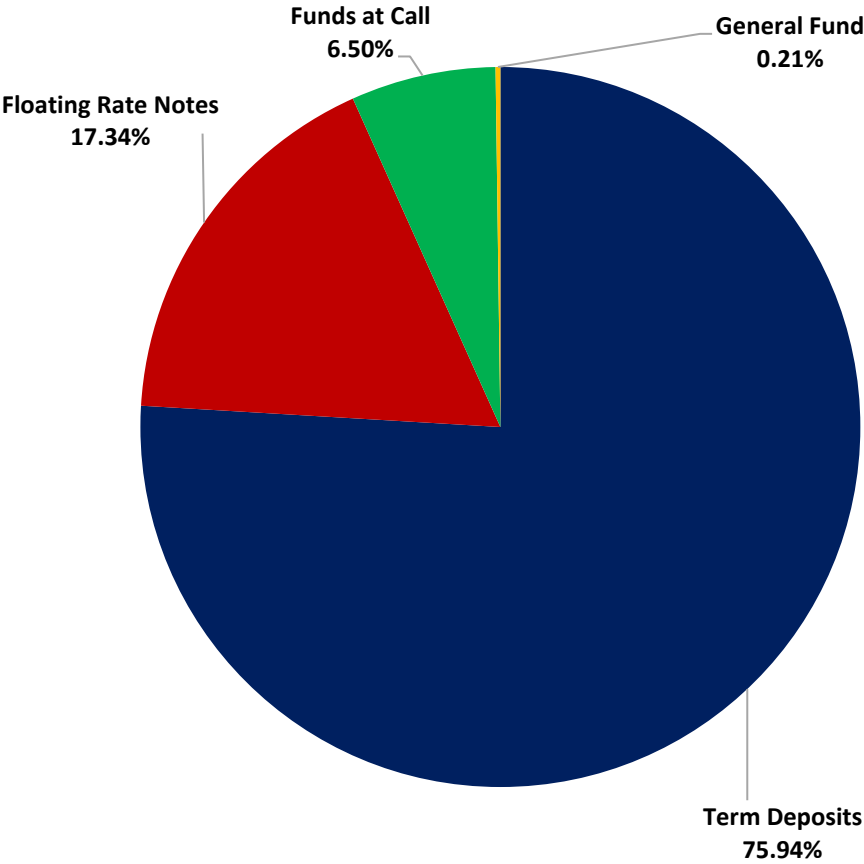
**Portfolio Liquidity - Minimum Allocations as at 30 September 2023**



**Risk Profile as at 30 September 2023**



**Risk Profile as at 30 September 2023**

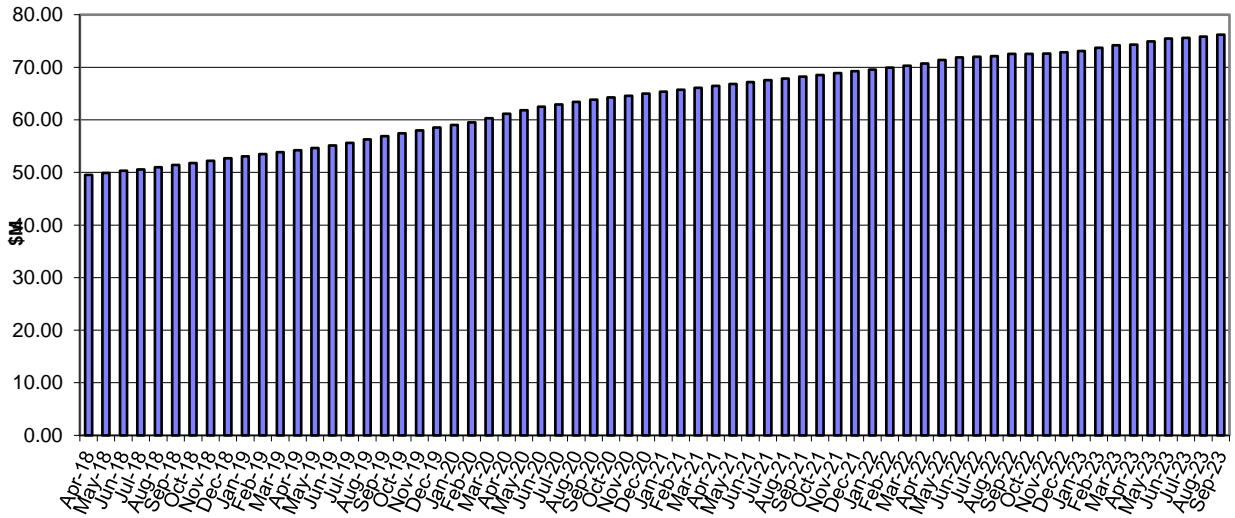


**INVESTMENT AND CASH DISTRIBUTION BY FINANCIAL INSTITUTION**

**as at 30 September 2023**

| Institution Category  | Financial Institution                                 | Amount<br>\$M | Financial Inst.<br>% | Institution Cat.<br>% |
|---|---|---------------|----------------------|-----------------------|
| Australian Big 4 Bank<br>(and related institutions)                             | ANZ Bank  | 24.5          | 3.0                  |                       |
|   | Commonwealth Bank                                     | 250.3         | 30.7                 |                       |
|   | National Australia Bank                               | 80.4          | 9.8                  |                       |
|   | Westpac Banking Corporation                           | 207.7         | 25.4                 |                       |
| <b>Big 4 Total</b>  |   | <b>562.9</b>  |                      | <b>68.9</b>           |
| Other Australian ADIs<br>and Australian subsidiaries<br>of foreign institutions | Bank Australia Limited                                | 9.5           | 1.2                  |                       |
|   | Bank of Queensland                                    | 18.0          | 2.2                  |                       |
|   | Bendigo & Adelaide Bank                               | 69.5          | 8.5                  |                       |
|   | Great Southern Bank (formerly Credit Union Australia) | 6.5           | 0.8                  |                       |
|   | ING Bank  | 70.0          | 8.6                  |                       |
|   | Suncorp Bank  | 48.8          | 6.0                  |                       |
|   | Macquarie Bank Ltd                                    | 14.0          | 1.7                  |                       |
|   | Northern Territory Treasury Corporation               | 10.0          | 1.2                  |                       |
| Newcastle Permanent Building Society  | 7.3   | 0.9           |                      |                       |
| <b>Other ADI Total</b>  |   | <b>253.5</b>  |                      | <b>31.1</b>           |
| <b>Grand Total</b>  |   | <b>816.4</b>  | <b>100.0</b>         | <b>100.0</b>          |

### Cumulative Outperformance over AusBond Benchmark - 2018-2023



### Cumulative Outperformance over 30 Day BBR Benchmark - 2018-2023

